

Details of Thimet 20G Registration PCP 29000

Presentation to the 2016 Wireworm Research and
Extension Seminar – March 14, 2016

Delly Keen
Regional Pesticide Officer



Background

- *June 1999* - PMRA announced that organophosphate active ingredients (including phorate) were subject to re-evaluation.
- *May 2004* - Re-eval decision document for phorate was published. Based on the risks to birds, mammals and aquatic organisms from the exposure to the granular product
 - Last date of use of Thimet 15G on corn, lettuce, beans and rutabagas was Dec 31, 2004.
 - Last date of use on potatoes was Dec 31, 2006 (lack of alternatives for wireworm control on potatoes).

- *May 2006* – Last date of use on potatoes revised to Aug 1, 2007
- *June 2007* – Last date of use on potatoes extended to Aug 1, 2008
- *March 2008* – Last date of use on potatoes extended to Aug 1, 2012
- *May 2012* – Last date of use on potatoes extended to Aug 1, 2015
- *September 2014* – Staff from PMRA Re-eval and Environmental Assessment Divisions in PEI to meet with industry
- *May 2015* – Staff from PMRA in PEI to see SmartBox system in operation
- *July 27, 2015* – Thimet 20-G (PCP # 29000) registered
- *August 1, 2015* – Thimet 15G (PCP 10532) expired

Thimet 20-G – Label

- Thimet 20-G is registered for wireworm control in potatoes. Not registered for use in BC.
- Only to be used in fields where wireworm populations have been observed
- Only to be used at planting
- REI 48 hours
- PHI 90 days
- Only 1 application per season

Thimet 20-G Label – Smart Box

- Thimet 20-G must be applied with a SmartBox pesticide application system properly calibrated to ensure accurate placement and rate. Pinch Valve also required.
 - Exposure with Smart-Box system is lower which reduces the occupational risk.
 - Pinch valve reduces the number of exposed granules on the surface thereby reducing risk to birds and waterfowl.
- In Atlantic Canada, Cavendish Agri Services is the only distributor/retailer

Thimet 20-G Label - PPE

PPE Requirements:

When loading product, clean-up and repair, workers must wear:

- chemical-resistant coveralls over a long-sleeved shirt and long pants,
- chemical-resistant gloves,
- ***chemical-resistant footwear plus socks,***
- ***protective eyewear, and***
- ***a respirator with a NIOSH-approved organic-vapour-removing cartridge with a prefilter approved for pesticides (or a NIOSH-approved canister approved for pesticides) with any N, R, P or HE filter.***

Applicators in Closed Cab must wear:

- cotton coveralls over a long-sleeved shirt and long pants,
- shoes and socks.
- Must either use an enclosed cab that provides respiratory protection against organic vapours and dust OR wear a respirator with a NIOSH-approved organic-vapour-removing cartridge with a prefilter approved for pesticides (or a NIOSH-approved canister approved for pesticides) with any N, R, P or HE filter
- If required to leave the cab while in the treated area, must have all necessary PPE on hand.

Thimet 20-G Label – Application rate & Plant-back

Application rates have changed:

- In sandy or light soil - 105 gram/product for 100 m (was 140)
- In silt or heavy soils - 161 gram/product for 100 m (was 215)
- Check label to see the new application rates at the various row spacing.

Plant-back intervals:

- No plant back interval required for potatoes
- 6 month plant-back interval is required for all other crops except potatoes and legumes
- 12 month plant-back interval is required for legumes

Thimet 20-G Label - Restrictions

Restrictions:

- Do not apply this product by air.
- Do not apply more than one application of Thimet 20-G per season.
- Do not apply this product to saturated soils. Do not apply in wet soil conditions that may prevent the equipment from covering pesticide granules. Do not apply while precipitation conducive to runoff is occurring or while conditions favor runoff from the treated area. Do not apply when forecasted precipitation event favors runoff from treated area.
- Do not apply the product without the use of a pinch valve at the base of the in-furrow delivery tube.

Restrictions continued:

- Under some conditions phorate may have a high potential for runoff into surface water for several days following application. Do not apply in the following areas:
 - Frequently flooded areas
 - Areas where intense or sustained rainfall is forecast to occur within 48 hours
- Do not apply within 15 m (50 feet) of any drinking water well to minimize potential contamination.
- Do not wash, load, or empty application equipment near any well, as this practice is a potential source of ground water contamination.

Thimet 20-G Label – Minimize Surface Runoff

Use Best Management Practices (BMPs) for minimizing surface runoff in the following areas:

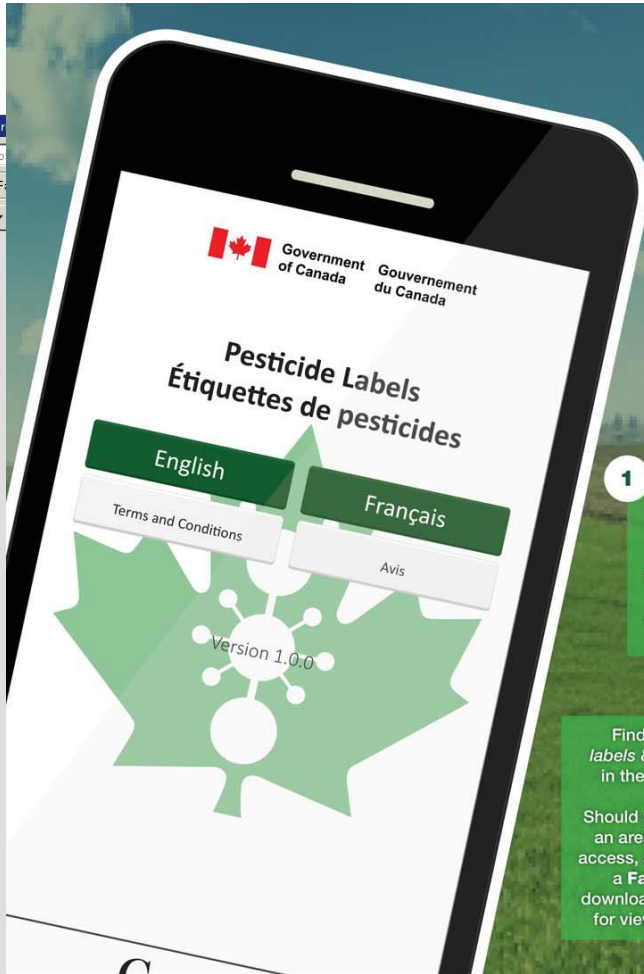
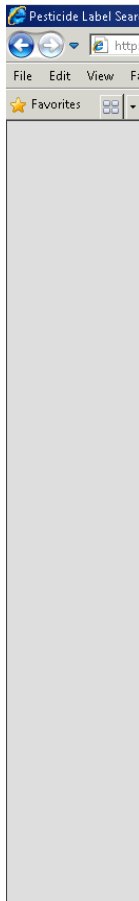
- Poorly drained or wet soils with readily visible slopes toward adjacent surface water
- Areas over-laying extremely shallow ground water
- Areas with in-field canals or ditches that drain to surface water
- Areas not separated from adjacent surface waters with vegetated filter strips
- Areas over-laying tile drainage systems that drain to surface water

- When used on erodible soils, BMPs for minimizing runoff should be followed. Consult your local soil conservation service for recommendations in your use area.
- In particular, where highly erodible land (HEL) is adjacent to aquatic bodies, leave a 20 m (66 feet) buffer/setback area in grass or other natural vegetation.

Incident Reporting

- Report any unintended or unexpected effect resulting from exposure or use.
 - Information reporting pesticide Problems can be found at healthcanada.gc.ca/pesticideincident
- If an adverse effect on birds or mammals is observed or suspected, please submit a Pesticide Voluntary Incident Reporting Form directly to Health Canada.

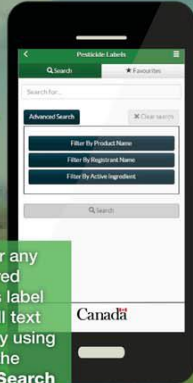
Label Search Tools



Health Canada Pesticide Labels App



1 Search for any registered pesticide's label using a full text search, or by using any of the **Advanced Search** options.



2 From the results of your search, you can filter within the results, save any of the labels as a **Favourite**, or save your search.



4 Find your **Favourite** labels & **Saved** searches in the **Favourites** tab.

Should you find yourself in an area without Internet access, any labels saved as a **Favourite** will be downloaded to your device for viewing while offline!



3 Clicking on any of the results gives more details on the **pesticide product**, allows you to save it as a **Favourite**, and view a **PDF** version of the label.



The **FREE Pesticide Labels App** is available for **iOS, Android & the Amazon App Store for Blackberry** or scan the QR code from your device.



Contact Information

- Web Site:
www.hc-sc.gc.ca/cps-spc/pest/index-eng.php
- Toll-free information service:
1-800-267-6315
- PEI Regional Contact: Delly Keen
902-370-4515
Delephina.keen@hc-sc.gc.ca